



FLEXMETRIC

TLS210NRx1 / TLS210SRx1

AUTOMOTIVE AND LIGHT TRUCK GENERAL SERVICE
TLS LIFTS INCLUDE NORTH AMERICAN KEY COMPONENTS

FLEXMETRIC

(OPTIONAL SYMMETRIC MODEL)
10,000 LB. / 4.5T CAPACITY

3 PIECE OR 2 PIECE FRONT & REAR ARMS



Shown with optional height adapters



FLEXMETRIC

INCLUDED FEATURES AND ACCESSORIES



▲ Three piece, offset arms front and rear for asymmetric and symmetric loading



▲ Drop in screw adjustment style lifting pads

OPTIONAL ACCESSORIES



▲ Height adapters #TLS2PTA4-2

FLEXMETRIC

10,000 LB./ 4.5T CAPACITY

FLEXMETRIC TLS210NRx1 / EXTENDED TLS210NXx1
 SYMMETRIC TLS210SRx1 / EXTENDED TLS210SXx1

AT TLS OUR GOAL IS TO BUILD LIFTS THAT LAST LONGER, PERFORM BETTER AND COST LESS TO OPERATE

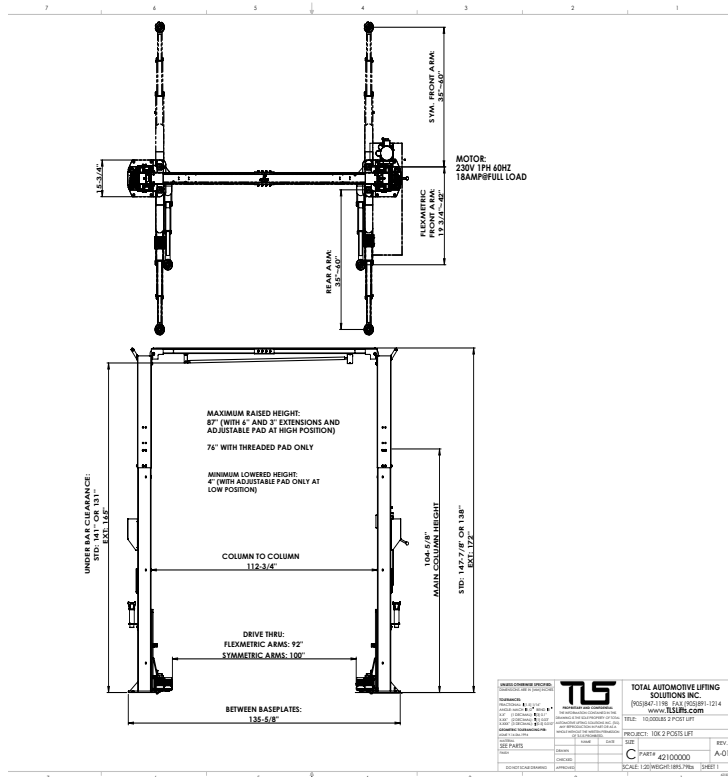
SPECIFICATIONS

Capacity	10,000 lb. / 4.5T
Overall Height	138" or 148" / 3505mm or 3759mm
Under Bar Clearance	131" or 141" / 3327mm or 3581mm
Overall Width	135-1/2" or 145-1/2" / 3429mm or 3683mm
Width Between Columns	112-3/4" or 122-3/4" / 2845mm or 3099mm
Drive Thru Width	92" or 102" / 2337mm or 2591mm
Height to Lowered Lift Pad	4" / 102mm
Raised Height with Standard Pad	76" / 1930mm
Raise Height with Adapters	87" / 2210mm
Lifting Time	55 seconds
Front Arm Reach	19-3/4" to 42" / 502mm to 1067mm - Symmetric 35" to 60" / 889mm to 1524mm
Rear Arm Reach	35" to 60" / 889mm to 1524mm
Standard Power Requirements	230 Volts - 50/60 Hz - 1 PH - 20amp
Shipping Weight	1,980 lbs. / 900 kg.
Model: TLS210NRx1	Height as listed
Model: TLS210SRx1	Height as listed, Symmetric, Equal Arms
Model: TLS210NXx1	Extended Ht. 172" / 4370mm

FEATURES

- Stronger and more stable structure** - up to 20% heavier than many competitors. Two (2)" / 51 mm reinforcement tubes are welded inside the 11" x 7" with 1/4" wall / 279mm x 178mm with 6mm wall columns to provide better stability with heavier loads.
- Premium North American Components** - North American made Bucher 2HP / 1.5kw power unit, 3/8" / 9.5mm equalizing cables and 2" / 51 mm ID hydraulic cylinders provide longer more dependable service life.
- Reduced vehicle setup time** - Acme screw "drop in" style lift pads have a lowered height with rubber pad of 4" / 102mm and can be extended by 1-1/2" / 38mm, 3" / 76mm or 6" / 152mm using nickel plated drop in adapters. Power unit can be installed on either column.
- Quieter operation less than <75 decibels** - rubber mounting grommets reduce power unit noise.
- Car door protection** - 11" x 2" / 279mm x 51mm rubber door bumpers are mounted on the face of both lifting carriages to reduce door damage.
- More models to chose from** - standard Flexmetric design with 3 piece lifting arms, symmetric version with equal length straight arms, extended height 172" / 4389mm and choice of red or blue.
- Corrosion resistant protection** - steel components are wheelabrator shot blasted and acid washed before a "double bake" powder coat finish is applied.
- Lifts higher to provide more under car work area** - the 70-1/2" / 1791mm long cylinder stroke provides 76" / 1930mm lift without adapters with a maximum attainable lift height of 87" / 2210mm.
- Flexible vehicle loading** - Flexmetric arm design uses three (3) piece "offset" front and straight (3) piece rear lifting arms for optimum asymmetric and symmetric loading opportunities.
- Reduced installation costs** - field adjustable height and width can easily adapt to most installation dimensions.

EQUIPMENT FOOTPRINT



ADDITIONAL FEATURES



3/8" / 9.5mm non fatigue cables with 3-1/2" / 89mm pulleys



2" / 51 mm tube column reinforcement



Single point lock release

CONTACT US NOW

WWW.TLSLIFTS.COM OR CALL (877) 799-5438

