



**HD IN GROUND**  
 TLSIG225SRK3 / TLSIG236PRK1  
 TLSIG325SRK3 / TLSIG33612PRK3

TRUCK AND BUS GENERAL SERVICE  
 TLS LIFTS INCLUDE NORTH AMERICAN KEY COMPONENTS

# LOW PRESSURE HD IN GROUND LIFTS

25,000 LB. OR 36,000 LB.  
 / 11.4T OR 16.4T CAPACITY

AVAILABLE IN 10 5/8" (270MM) OR 12 5/8" (321MM) PLUNGERS  
 USING TWO OR THREE LIFTING CYLINDERS FIXED OR  
 MOVABLE



## FEATURES



Electronic Control with Siemans PLC & Remote Pendant Switch Equalizes Raising and Lowering.



Adjustable Bolster with Specialty Flip Up and Fixed Lifting Adapters



Polished & Chrome Plated Plungers with Muli Position Locking Ladders Operating with Stainless Steel Air Lock Releases

# HD LOW PRESSURE IN GROUND

50,000 TO 108,000 LBS / 22.7T TO 49T CAPACITY

IN GROUND 2 CYLINDER TLSIG225SRK3 / TLSIG325PRK3  
IN GROUND 3 CYLINDER TLSIG236SRK3 / TLSIG336PRK3

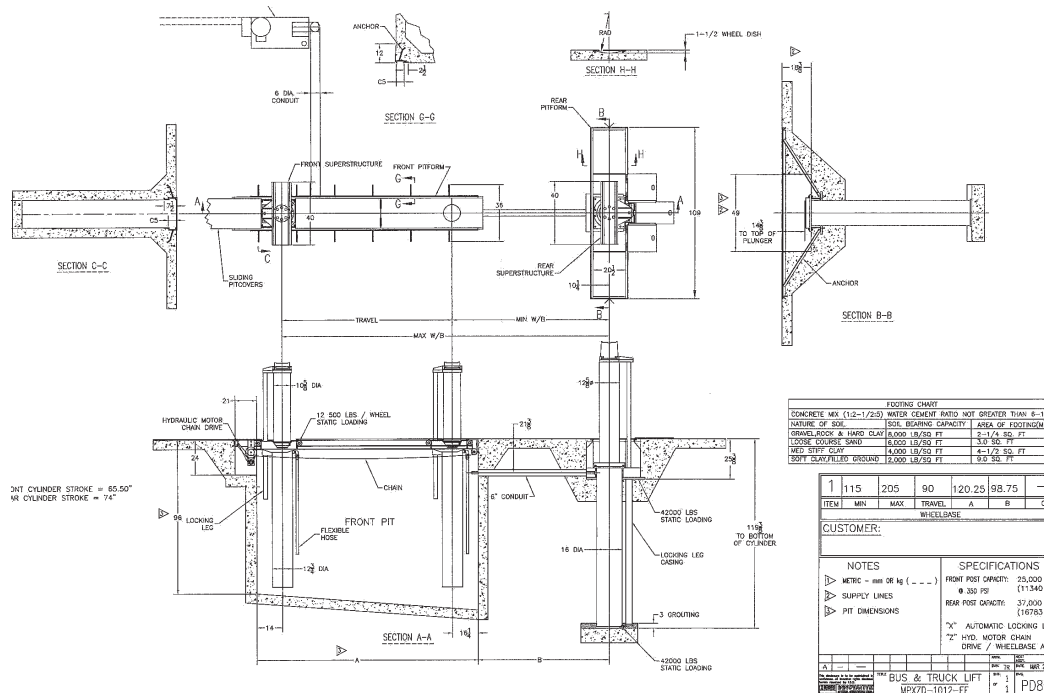
AT TLS OUR GOAL IS TO BUILD LIFTS THAT LAST LONGER, PERFORM BETTER AND COST LESS TO OPERATE

SPECIFICATIONS	LOW PRESSURE WITH 2 OR 3 CYLINDERS
Capacity	50,000 lb., 75,000 lb., 61,000 lb., 72,000 lb., 108,000 lb. / 22.7T, 34.1T, 27.7T, 32.7T & 49.1T CAPACITIES
Power supply	208/440 volt 3 phase or optional 600v
Hydraulic cylinders	10-5/8" or 12 5/8" / 270mm or 321mm Chrome Plated Plungers - 70" / 1778mm stroke
Lifting time	70 Seconds / 25 seconds decent
Overall width	40" (1-16mm) Bolster with 109" (2769mm) wide rear pit box
Overall Track Length	120" to 240" / 3M to 6M)
Movable Cylinder Drive	Hydraulic Powered Chain "Z" Drive
Overall lifting height	72" (1829mm)
# Of mechanical locks	19 mechanical locks
Lock release	Air cylinder lock release
Protection	Standard "kop coat" bituminous - optional hot dip galvanizing or fiber glass
Height adapters	Flip up adapters or fixed position specialty adapters for trucks and buses
Pit depth Front and Rear	96" front (2438mm) and 119" rear (3023mm)
In ground Track Width	17 5/8" (448mm)
Operating Pressure	275 to 350 psi / 1890 to 2414 kPa
Cylinder Equalization	Twin 20 or 30 gpm (76 or 113 liters/minute pumps controlled by a PLC operating electric solenoid controls

## FEATURES

- Long Cycle Life and low maintenance - HD cylinder and bearing design provides longer life and lower maintenance
- Recessed Frame design optimizes service bay productivity - optional recessd frame eliminates any surface components when lift is lowered.
- Environmentally safe design prevents soil contamination - machined and polished plungers provide long seal life and reduce leaking. Lift will operate using synthetic hydraulic oil..
- Optional Extended Service Lift Options - optional hot dip galvanizing of the cylinder casings, locking mechanism and cover pates
- Reaches most approved lifting pickup points - Adjustable bolster with specialty sliding adapters. In floor frame available from 120" to 240" (3M to 6M)
- Energy efficient 15HP to 20HP / 11 to 15 kw pump and motor - wall or pedestal mounted power unit with air lock release
- High lifting height of 72" / 1829mm and higher when used with specialty adapters - improves access and productivity for taller people.
- Heavy duty structure improves stability - stronger and more stable at all heights with very little flexing under heavy load.
- Built for safety and ease of use - mechanical locks engage automatically at all heights. Stainless steel air release cylinders.

## EQUIPMENT FOOTPRINT



CONTACT US NOW

WWW.TLSLIFTS.COM OR CALL (877) 799-5438

