



SCISSOR LIFT

TLSS12ALORx1 / TLSS12FDORx1

AUTOMOTIVE AND LIGHT TRUCK GENERAL SERVICE
100% DESIGNED AND BUILT IN NORTH AMERICA

SCISSOR LIFT

ALIGNMENT OR SERVICE
12,000 LB. / 5.4T CAPACITY

DOUBLE WALL RUNWAYS WITH "Z" RAILS, BUILT IN RADIUS
PLATE POCKETS & REAR SLIP PLATES



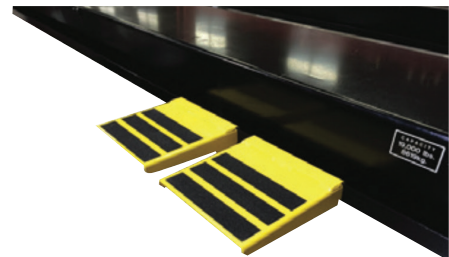
OPTIONAL ACCESSORIES



Jacking beam TLSRJ6



Stainless Steel Turnplates TLSSTP



Runway Step Platforms TLMWS

SCISSOR LIFT ALIGNMENT

12,000 LB. / 5.4T CAPACITY

ALIGNMENT TLSS12ALORx1
SERVICE TLSS12FDORx1

AT TLS OUR GOAL IS TO BUILD LIFTS THAT LAST LONGER, PERFORM BETTER AND COST LESS TO OPERATE

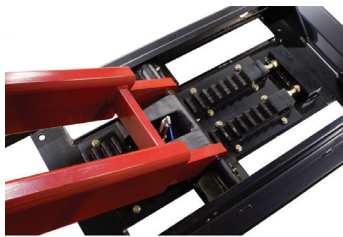
SPECIFICATIONS	* Dimension based on surface mounted lifts. For flush mount please contact factory.
Capacity	12,000 lbs / 5.4T
Overall Length	242-3/4" / 6166mm
Deck Length	185" / 4700mm
Overall Width	91-1/2" / 2324mm
Width Between Runways	41" / 1041mm
Deck Width	23" / 584 mm
Lowered Height	10-3/4" / 273mm
Raised Height	74" / 1880 mm
Minimum 4 Wheel Alignment Wheelbase	88-1/2" / 2248mm
Maximum 4 Wheel Alignment Wheelbase	164-1/2" / 4178mm
Maximum 2 Wheel Alignment Wheelbase	172" / 4369mm
Maximum Service Wheelbase	180" / 4572mm
Lift Time	58 Seconds
Power Requirements	230 Volts AC - 60 Hz - 1 PH - 25amp
Shipping Weight	5,890 lb. / 2.7T
Part Number	TLSS12ALORx1

FEATURES

- Built to higher quality standard; 100% North American made - premium US Leeson 3HP / 2.2kw motor and HPI pump.
- Superior structural strength provides longer life and more precise alignments - Non flex double wall runways with built in "Z" rail and heavy duty 3" x 6.5" 3/8" / 76mm x 165mm 9.5mm wall tubular legs
- Greater flexibility with more models to chose from - Available in surface or flush mounted, alignment or service deck and a choice of floor mounted "console" control or space saving wall/floor mounted power unit with pendant control.
- Premium options and accessories can expand the capabilities and service life - Stainless steel radius plates and rear steer plates, built in tire inflation hoses, removable work steps, LED runway lighting and premium heavy duty extended life 5 year warranty HD jacking beams
- Lower maintenance costs - steel components are wheel-a-brator shot blasted and acid washed before a "double bake" powder coat finish is applied. Zirk style grease fittings at all hinge points. Runway under rear slip plates is open to prevent water and dirt collecting.
- Precision levelling feature provides more accurate alignments - PCB Control with linear transducers control level to within 5/32" / 4mm. The full adjustable floor mounted rack and pinion style "gear blocks" allow for precise levelling.
- Designed for greater technician productivity - there are no obstructions between the runways or base frame. The lift rises 74" / 1880mm in 45 seconds with 20 locking positions. Built in runway compressed air outlets front and rear.

ADDITIONAL FEATURES

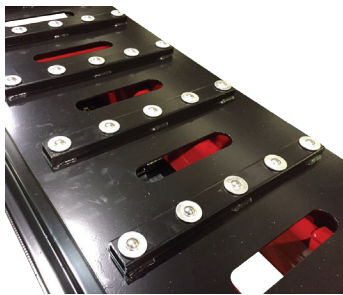
POWER UNIT OPTIONS



Scissor Rack and Pinion style Gear Rack



Enclosed Console Control

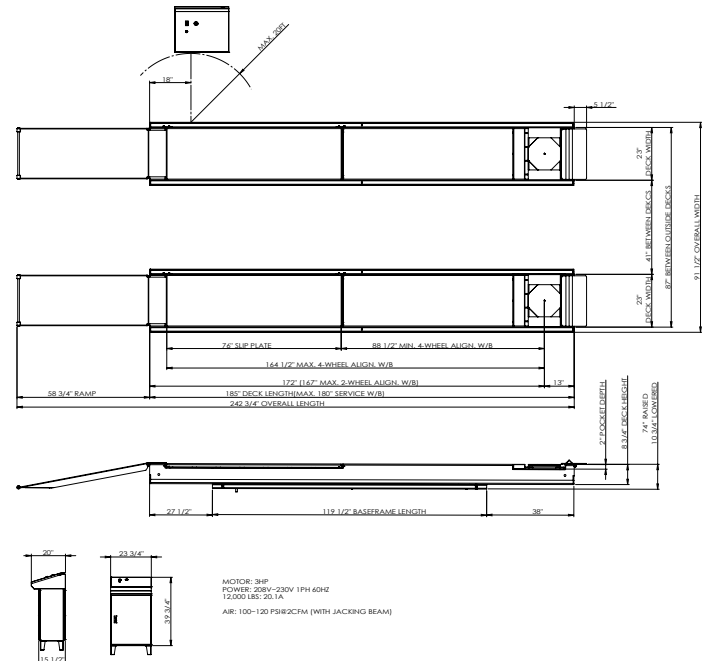


Open runway slots under rear slip plates



Wall/Floor Mount with Pendant

EQUIPMENT FOOTPRINT



CONTACT US NOW

WWW.TLSLIFTS.COM OR CALL (877) 799-5438

