



# SCISSOR LIFT

TLSS14ALORx1 / TLSS14FDORx1

**AUTOMOTIVE AND LIGHT TRUCK GENERAL SERVICE**  
100% DESIGNED AND BUILT IN NORTH AMERICA

## SCISSOR LIFT

**ALIGNMENT OR SERVICE**  
**14,000 LB. / 6.4T CAPACITY**

DOUBLE WALL RUNWAYS WITH "Z" RAILS,  
BUILT IN RADIUS PLATE POCKETS & REAR SLIP PLATE



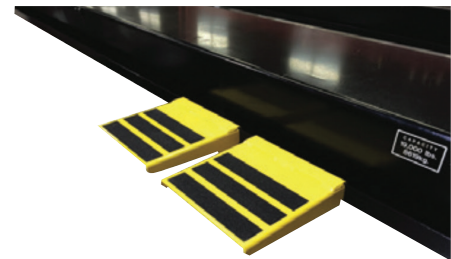
### OPTIONAL ACCESSORIES



Jacking beam #TLS-RJ7



Stainless Steel Turnplates #TLSSTP



Runway Step Platforms #TLMWS

TOTAL AUTOMOTIVE LIFTING SOLUTIONS INC. 2300 SPEERS RD OAKVILLE, ON L6L 2X8 PHONE (877) 799-5438 FAX (905) 891-1214

JUNE 2017

# SCISSOR LIFT

## 14,000 LB./ 6.4T CAPACITY

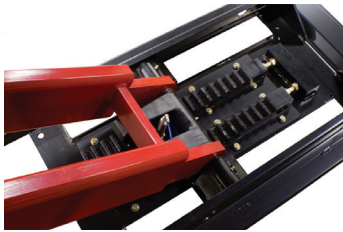
ALIGNMENT TLSS14ALORx1  
SERVICE TLSS14FDORx1

AT TLS OUR GOAL IS TO BUILD LIFTS THAT LAST LONGER, PERFORM BETTER AND COST LESS TO OPERATE

### SPECIFICATIONS

Capacity	14,000 lbs / 6.4T
Overall Length	260-3/4" / 6623mm
Deck Length	203" / 5156mm
Overall Width	91-1/2" / 2324mm
Width Between Runways	41" / 1041mm
Deck Width	23" / 584 mm
Lowered Height	10-3/4" / 273mm
Raised Height	74" / 1880 mm
Minimum 4 Wheel Alignment Wheelbase	88-1/2" / 2248mm
Maximum 4 Wheel Alignment Wheelbase	164-1/2" / 4178mm
Maximum 2 Wheel Alignment Wheelbase	185" / 4699mm
Maximum Service Wheelbase	198" / 5029mm
Lift Time	58 Seconds
Power Requirements	230 Volts AC - 60 Hz - 1 PH - 25amp
Shipping Weight	6,230 lbs. / 2.8T
Part Number	TLSS14ALORx1

### ADDITIONAL FEATURES



Scissor Rack and Pinion style Gear Rack



Open runway slots under rear slip plates

### POWER UNIT OPTIONS



Enclosed Console Control

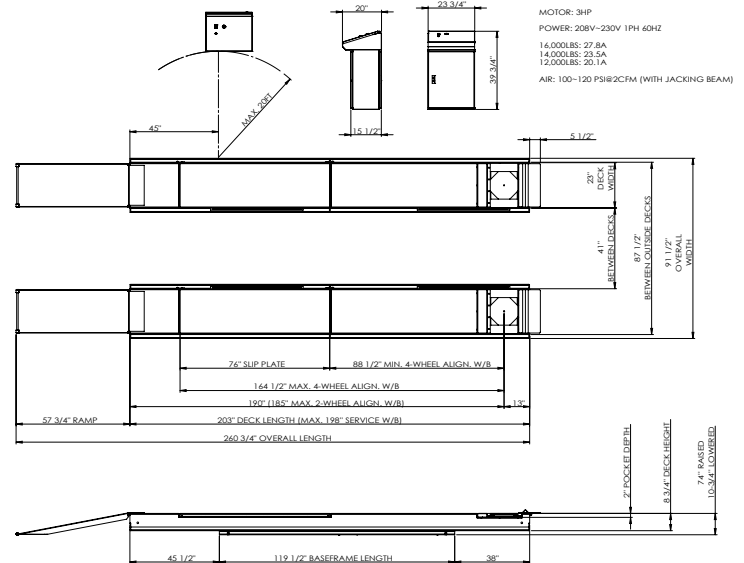


Wall/Floor Mount with Pendant

### FEATURES

- **Built to higher quality standard; 100% North American made** - premium US Leeson 3HP / 2.2kw motor and HPI pump.
- **Superior structural strength provides longer life and more precise alignments** - Non flex double wall runways with built in "Z" rail and heavy duty 3" x 6.5" x 3/8" / 76mm x 165mm x 9.5mm wall tubular legs
- **Greater flexibility with more models to chose from** - Available in surface or flush mounted, alignment or service deck and a choice of floor mounted "console" control or space saving wall/floor mounted power unit with pendant control.
- **Premium options and accessories can expand the capabilities and service life** - Stainless steel radius plates and rear steer plates, built in tire inflation hoses, removable work steps, LED runway lighting and premium heavy duty extended life 5 year warranty HD jacking beams
- **Lower maintenance costs** - steel components are wheel-a-brator shot blasted and acid washed before a "double bake" powder coat finish is applied. Zirk style grease fittings at all hinge points. Runway under rear slip plates is open to prevent water and dirt collecting.
- **Precision levelling feature provides more accurate alignments** - PCB Control with linear transducers control level to within 5/32" / 4mm. The full adjustable floor mounted rack and pinion style "gear blocks" allow for precise levelling.
- **Low pressure hydraulics provides longer life** - 2" x 6" / 51mm x 152mm "Break Out" cylinders allow the 25" x 4-1/2" / 635mm x 114mm ID cylinders to operate at <2500 psi under full load.
- **Designed for greater technician productivity** - there are no obstructions between the runways or base frame. The lift rises 74" / 1880mm in 58 seconds with 20 locking positions. Built in runway compressed air outlets front and rear.

### EQUIPMENT FOOTPRINT



CONTACT US NOW

WWW.TLSLIFTS.COM OR CALL (877) 799-5438

